

# 株洲威克多硬质 合金有限公司

Zhuzhou Weikeduo Cemented  
Carbide Co., Ltd

硬质合金复合焊条

**Tungsten Carbide Composite Welding Bar**



## 产品简介 Product Introduction

硬质合金复合焊条是由硬质合金破碎粒与镍基合金或铜基合金烧结制备。尖锐的硬质合金破碎粒具备良好的耐磨性和切（磨）削能力。

硬质合金复合焊条作为硬面材料之一，用途广泛，主要用于堆焊、石油、矿山、采煤、地质、建筑等工业中一些严重磨损或兼有切削的工件。典型的用于井下工具，如孔井、开孔器、垃圾处理厂、铣削工具、打捞工具、扶正器等。

Tungsten Carbide Composite Rod is made by sintering crushed particles of cemented carbide with Nickel-based alloy or Copper-based alloy. The sharp cemented carbide crushed particles have good wear resistance and cutting (grinding) ability.

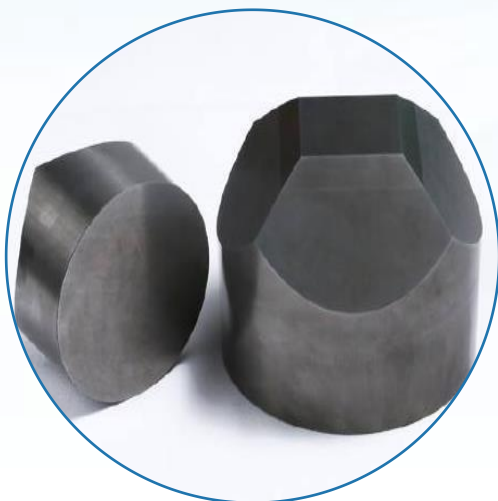
As one of the hard surface materials, the cemented carbide composite rod is widely used. Mainly used for surfacing welding, petroleum, mining, coal mine, geology, construction and other industries with severe wear or cutting workpieces. Typically used in downhole tools such as boreholes, hole openers, waste disposal plants, milling tools, fishing tools, centralizers, etc.

## 产品优势 Our Advantage

我司生产硬质合金焊条的合金颗粒全部采用顶锤料，产品成分一致，保证产品性能稳定。我司独立研发的筛选颗粒方式，保证我们合金颗粒饱满，使得产品更加耐磨。采用优质焊料，保证我们焊条的流动性，易于焊接，帮助客户提高生产效率。

The crushed particles of our company's tungsten carbide composite rod are all made of top hammer material, and the product composition is consistent to ensure stable product performance.

The particles screening method independently developed by our company ensures that our crushed particles are multi angular and makes the product more wear-resistant. The use of high-quality solder ensures the fluidity of our rods, easy to weld, and helps customers improve production efficiency.



## 化学成分 Chemical Composition

牌号Grade	化学成分Chemical Composition (Wt%)			
	Ni+Cu+Zn+Sn	Cu+Zn+Sn	WC	Co
Cu-30	--	30±2	63-65	5.2-6.0
Cu-40	--	40±2	53-56	4.6-4.8
Cu-45	--	45±2	48-52	4.2-4.5
Cu-50	--	50±2	44-48	3.8-4.2
Ni-Cu-30	30±2	--	63-65	5.2-6.0
Ni-Cu-40	40±2	--	53-56	4.6-4.8
Ni-Cu-45	45±2	--	48-52	4.2-4.5
Ni-Cu-50	50±2	--	44-48	3.8-4.2

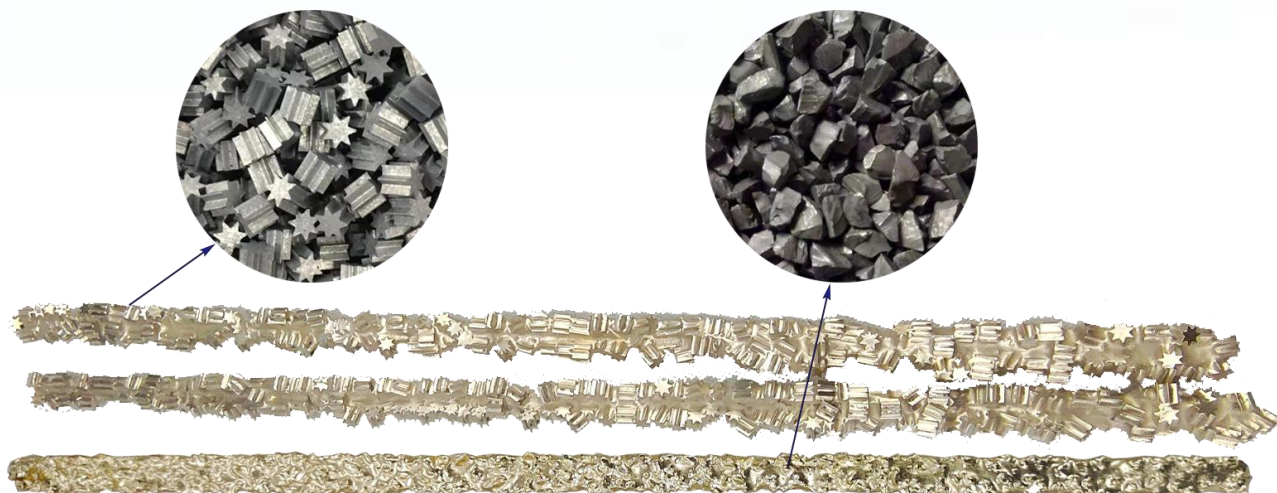
Customize Particle Contents is Welcome

## 产品规格 Specification

	Metric (mm)	Inch
颗粒大小 Grain Size	0.4-1.6	1/64"-1/16"
	1.6-3.2	1/16"-1/8"
	3.2-4.8	1/8"-3/16"
	4.8-6.4	3/16" -1/4"
	6.4-8.0	1/4"-5/16"
	8.0-9.5	5/16"-3/8"
	Special Shape	
Length	Weight	Width
280mm	250g-290g	10-12mm
450mm	450g-480g	14-16mm

**Hardness 87-90 HRA**

Customize Grain Size is Welcome



熔点 Welding Point

- 900-1050 °C(1000-1100°C for with Nickel)

密度 Density

- 12.5-13.0 g/cm<sup>3</sup>

硬度 Hardness

- 87-90 HRA

